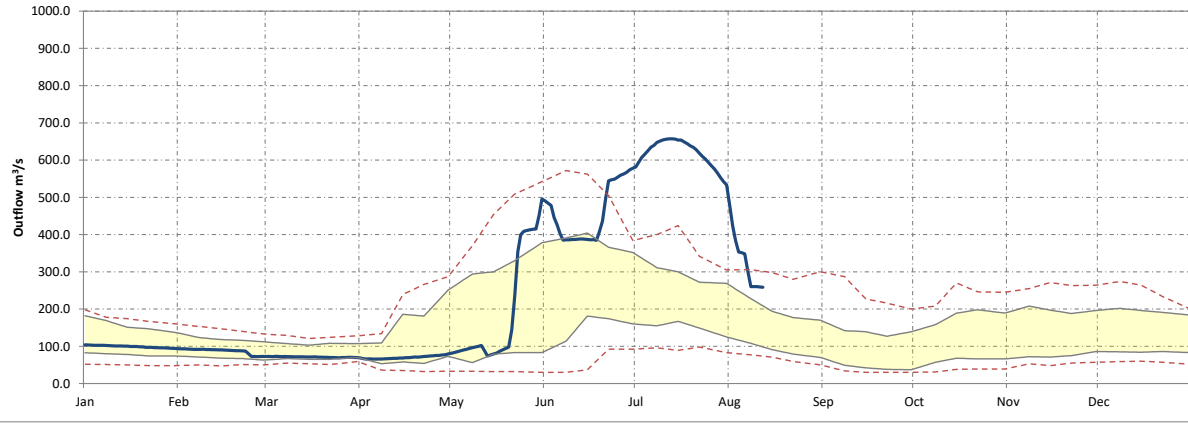
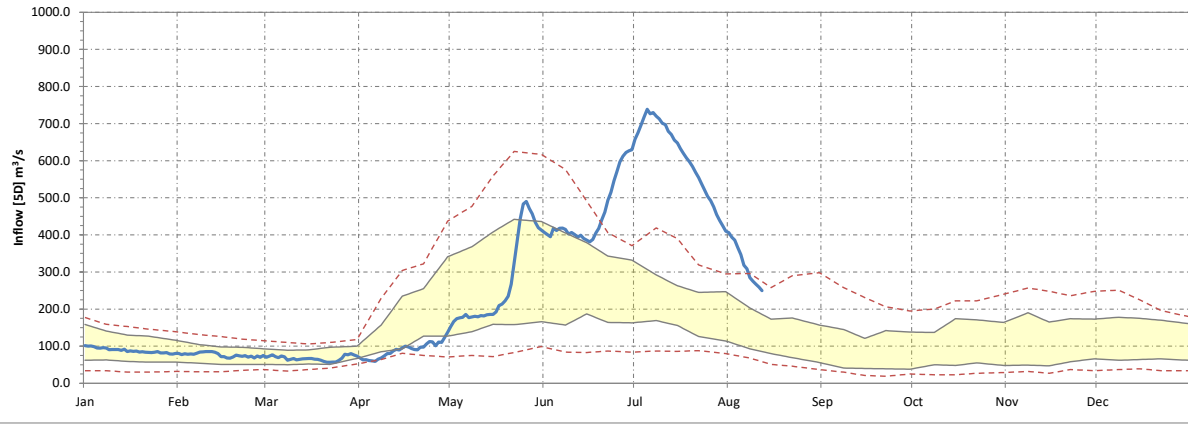
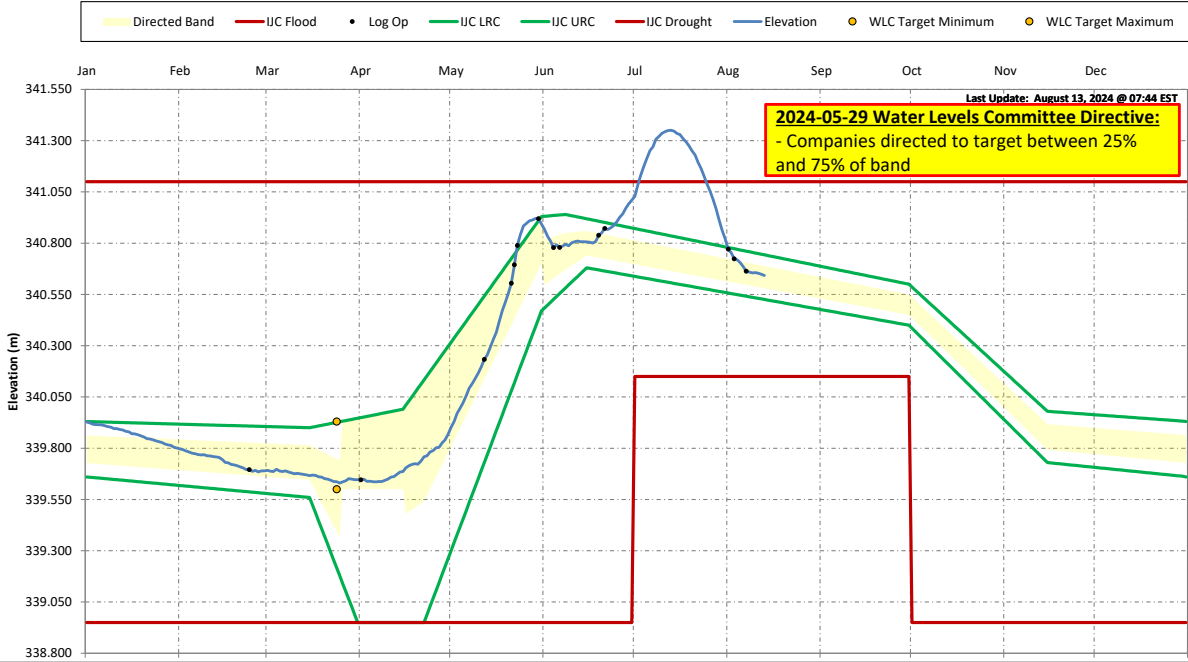
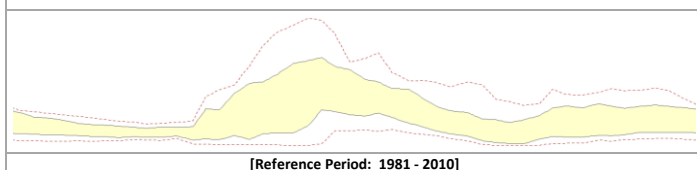


### Namakan Lake Elevation



#### Percentile Data (10<sup>th</sup>, 25<sup>th</sup>, 75<sup>th</sup>, & 90<sup>th</sup>)



[Reference Period: 1981 - 2010]

Date	Elevation (m)	Inflow [5D] (m <sup>3</sup> /s)	Outflow [1D] (m <sup>3</sup> /s)
6-Aug-24	340.686	318.1	348.3
7-Aug-24	340.663	308.4	302.2
8-Aug-24	340.659	284.9	260.5
9-Aug-24	340.655	275.2	260.4
10-Aug-24	340.657	266.9	260.1
11-Aug-24	340.653	259.4	259.5
12-Aug-24	340.648	249.8	258.5

Provisional Data